

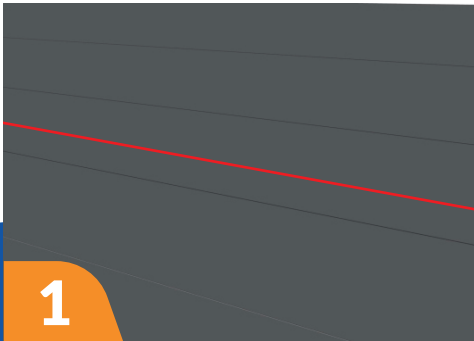
CHIKOUSA
RACKING MADE SIMPLE

Standoff for Side Mount Rails

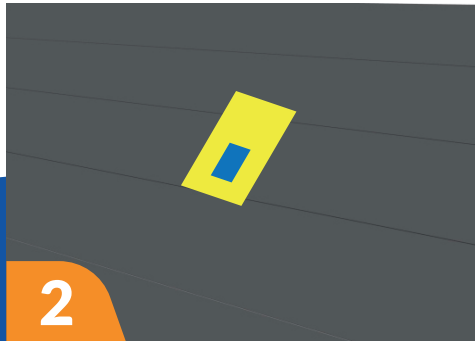
Installation Instructions

Standoff Kit

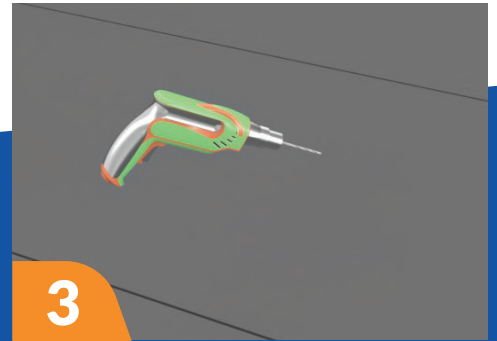
The Chiko Solar Standoff Kit includes a base, 2 lug bolts, a round EPDM washer, and an aluminum post with a cap. This standoff is available in 3 different sizes: 3.5", 4.5", and 6". This Standoff is designed for use on flat roof installations. The Standoff is to be installed on the top of the existing roof without any needed modifications and without compromising the integrity of the structure. Chiko guarantees a quick and easy installation with long lasting quality. Please follow the installation manual for proper installation.



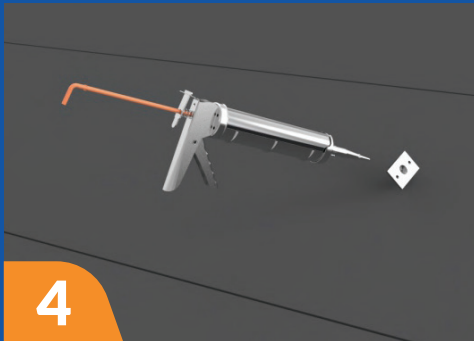
1 Use a chalk line to mark the roof.



2 Locate the beams of the roof using a stud finder.



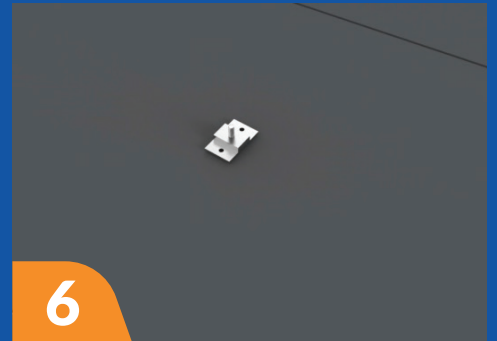
3 Drill a 1/4" pilot hole.



4 Backfill the pilot hole with Sealant.



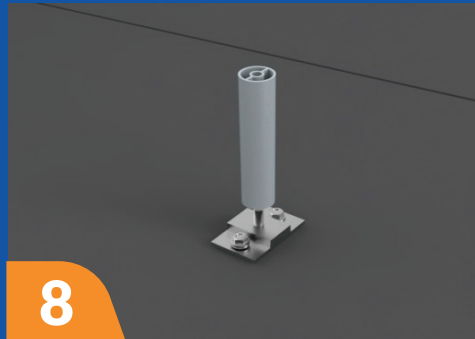
5 Apply sealant on the base of the standoff.



6 Place the standoff base on top of and in line with both pilot holes.



7 Drive two 3/8" lug bolts into the roof. Make sure sealant comes out when you fasten the bolts.



8 Install a round EPDM washer and screw the aluminum post on to the base. (Base, Washer, Post)



9 Apply sealant to the bottom portion of the flashing. Install flashing over the post, inserting the post through the bottom of the flashing.

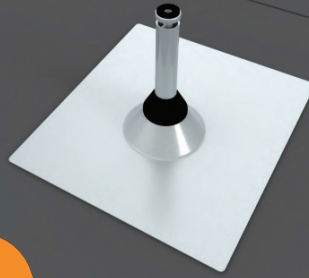
Standoff Kit

10



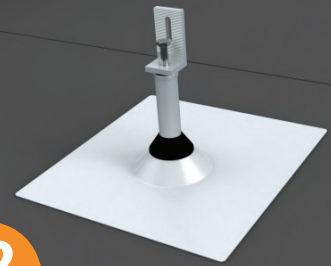
Install the cone shaped EPDM washer cap on top of the aluminum flashing.

11



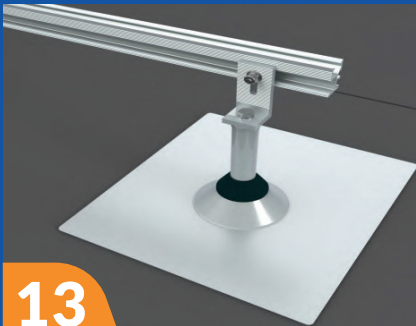
Install aluminum cap with EPDM washer.

12



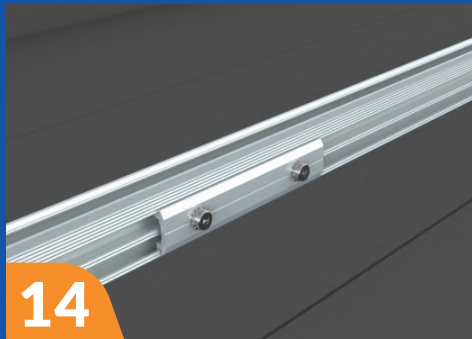
Connect the L-Foot using a 3/8" hex bolt with spring washer.

13



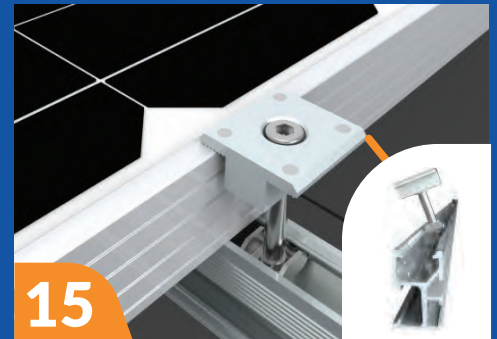
Connect Chiko Solar's proprietary Rail to the L-Foot using a flange nut. Tighten to secure (18 Ft Lb).

14



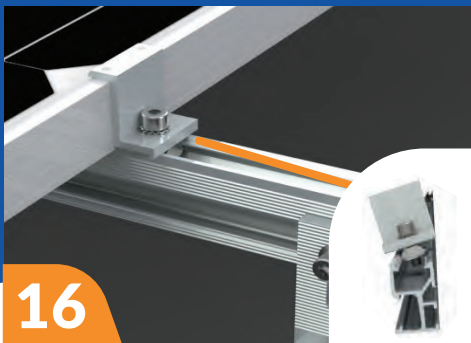
Install our Rail splice kits at all connections between two rails. (10 Ft Lb).

15



Insert the Mid Clamp nut by tilting it in the opening on the top of the rail. Fasten and install at all locations where two modules meet (10 Ft Lb). Locations of mid clamps can be determined by panel manufacturer datasheet

16



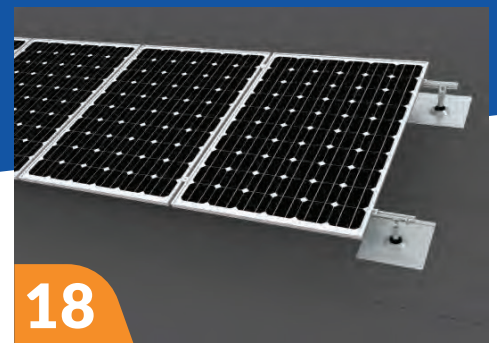
Insert End Clamp nut by tilting it in the opening on the top of the rail. Fasten at the end of each array (10 Ft Lb).

17



Install the Grounding Lug on each section of rail. Run copper wire to connect them all. Tighten to 3 Ft Lb.

18



The system is complete.

Important Information

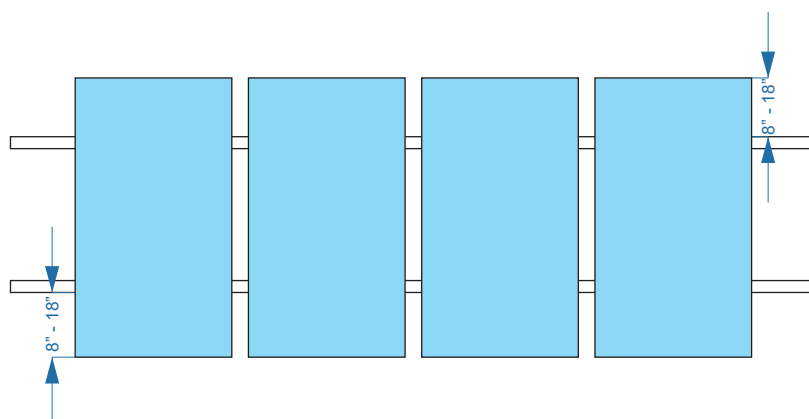
Please read and follow the installation manual.

This manual is for a non-integral module or panel. Module or panel is to be mounted over a fire resistant roof covering that is rated for this application.

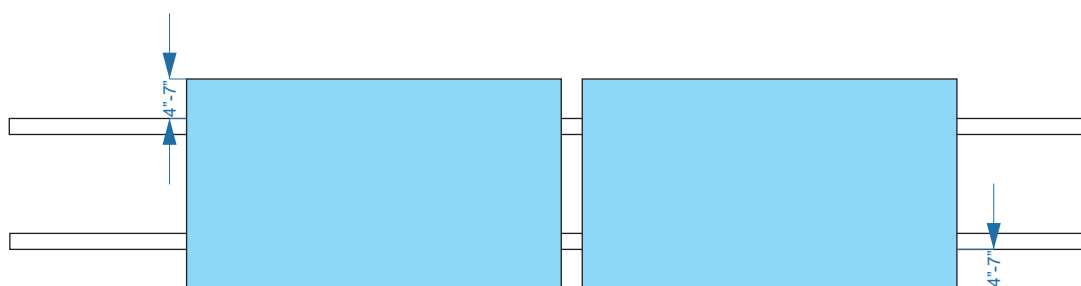
After installation- re-inspect for loose components, loose fasteners and any visible corrosion, and if found the affected components are to be immediately replaced.

Rail spacings are as follows:

- When mounted in portrait rails may mounted 8" to 18" from the module edge.



- When mounted in landscape rails may be mounted 4" - 7" from module edge.



Chiko Solar passed UL System Fire Class A

CHIKOUSA
RACKING MADE SIMPLE

For additional information contact us :

Tel : 1-800-948-5390

Email : info@chikousa.com

www.chikousa.com



101 East Baseline Road
Buckeye, AZ 85326