

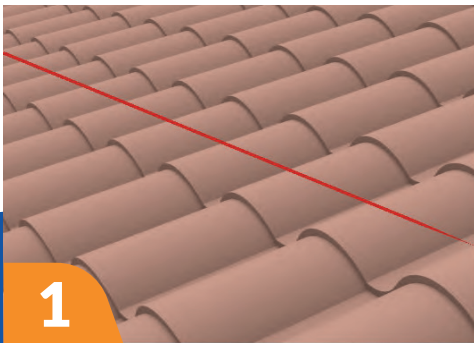
CHIKOUSA
RACKING MADE SIMPLE

S-Tile Hook for Side Mount Rails

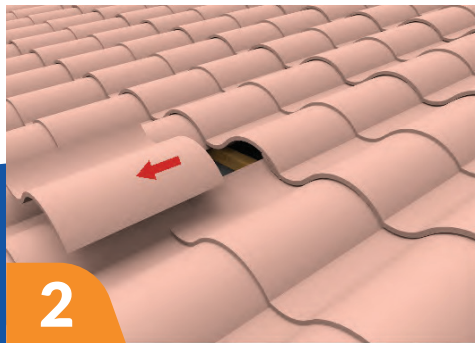
Installation Instruction

S - Tile Hook Kit

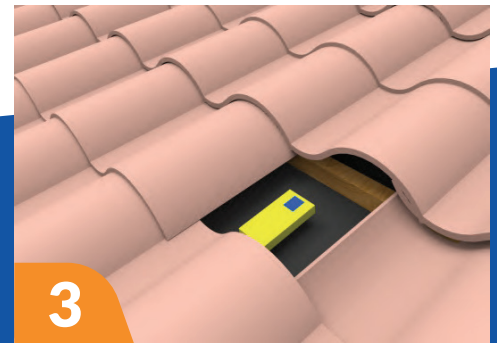
Our Chiko Solar S-Tile Kit is made of SUS304 Stainless Steel. It is designed for use on curved S-Tile roofs. Our hook is installed under the existing roof by removing a tile and placing it back in its original place after the hook is secured to the underlying rafter. It does not require modification to the structure, maintaining the structure's integrity. Chiko Solar guarantees a quick, easy installation with long lasting quality. Please follow this installation manual for proper installation.



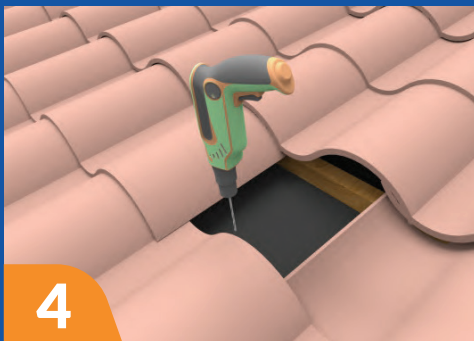
1 Use a chalk line to mark the roof.



2 Remove the tile where you are installing the hook by gently pulling and pushing the tile.



3 Locate the beams of the roof using a stud finder.



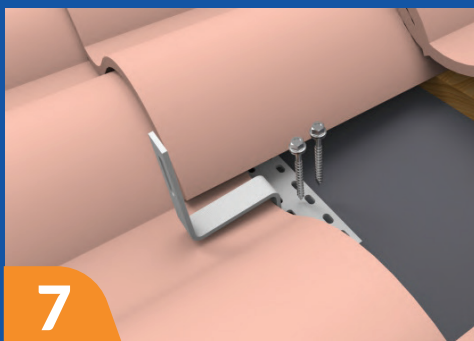
4 Drill two 1/4" pilot holes.



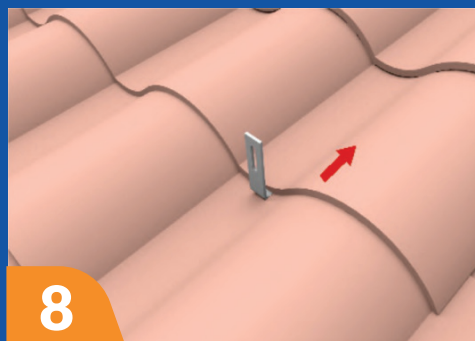
5 Backfill both pilot holes with sealant.



6 Place the hook on top of the rafter to which it will be installed. Make sure the hook is in contact with the tile below it to prevent damage to the roof.



7 Drive two 3/8" bolts in to the rafter to secure the hook in place

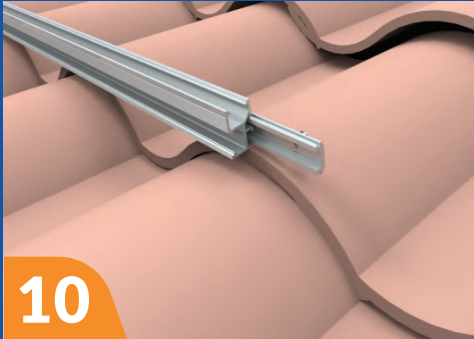


8 Return the tile to its original location. Slight alteration to the bottom of the tile may be required where the hook protrudes.

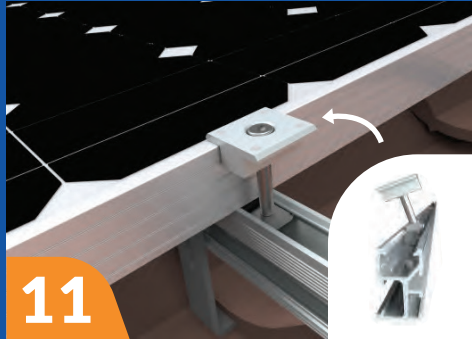


9 Connect Chiko Solar 'proprietary Railto to the hook using a flange nut and bolt. Tighten to secure (18 Ft Lb).

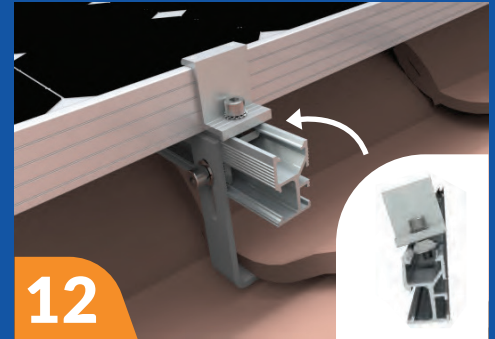
S - Tile Hook Kit



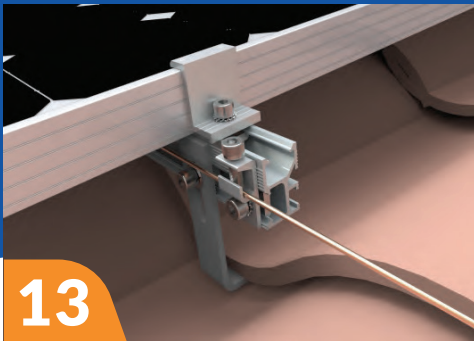
10
Install our Rail splice kits at all connections between two rails. (10 Ft Lb).



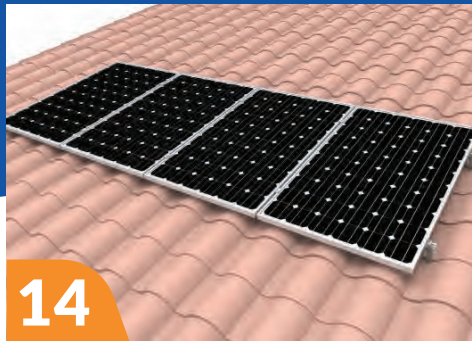
11
Insert the Mid Clamp nut by tilting it in the opening on the top of the rail. Fasten and install at all locations where two modules meet (10 Ft Lb). Locations of mid clamps can be determined by panel manufacturer datasheet.



12
Insert End Clamp nut by tilting it in the opening on the top of the rail. Fasten at the end of each array (10 Ft Lb).

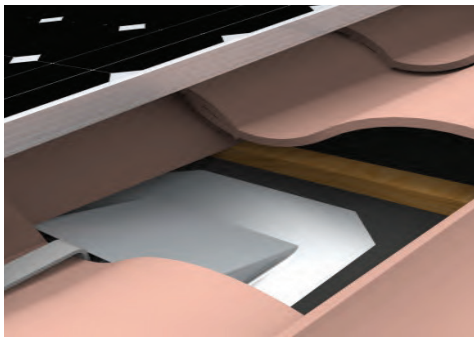


13
Install the Grounding Lug on each section of rail. Run copper wire to connect them all. Tighten to 3 Ft Lb.



14
The system is complete.

Optinal Aplication



Apply sealant to the bottom portion of the flashing. Attach to the roof with roofing nails; apply sealant.



Important Information

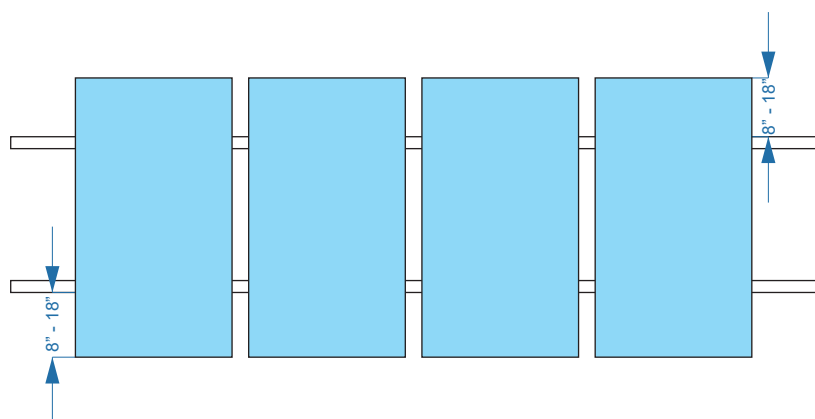
Please read and follow the installation manual.

This manual is for a non-integral module or panel, assemble it to be mounted over a fire resistant roof covering rated for application.

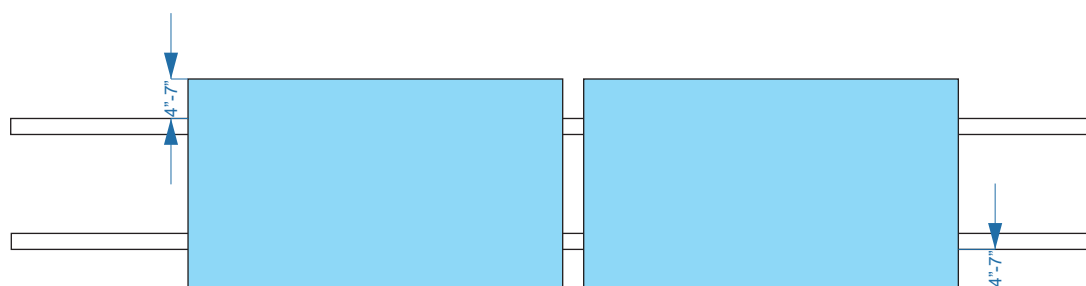
Re-inspect the installation for loose components, loose fasteners and any corrosion, such that if found, the affected components are to be immediately replaced

Rail spacings are as follows:

- When mounted in portrait rails may mounted 8" to 18" from the module edge.



- When mounted in landscape rails may be mounted 4" - 7" from module edge.



Chiko Solar passed UL System Fire Class A

CHIKOUSA
RACKING MADE SIMPLE

For additional information contact us :

Tel : 1-800-948-5390

Email : info@chikousa.com

www.chikousa.com



101 East Baseline Road
Buckeye, AZ 85326