



**CHIKOUSA**  
RACKING MADE SIMPLE

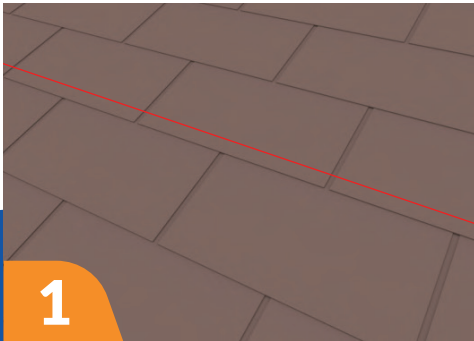
# L Foot Kit for Side Mount Riles

## Installation Instruction

\*Available in Clear & Black

# L-Foot Kit

Each of Chiko Solar's composition hook and L-Foot kits comes complete with 1 piece of 12"x 9" Chiko Solar flashing to be used on roofs that are either asphalt or composition shingle. The roof flashing slides under the existing roof without modification and without compromising the integrity of the structure. Chiko Solar guarantees a quick, easy installation with long lasting quality. Please follow this installation manual for proper installation.



1 Use a chalk line to mark the roof.



2 Locate the beams of the roof using a stud finder.



3 Drill a single 1/4" pilot hole.



4 Backfill the pilot hole with Sealant.



5 Insert the Chiko Solar flashing under the shingle as far as possible. This will ensure there is no water infiltration



6 Attach the EPDM sticker to the bottom of the L-Foot.



7 Align the holes of the L-Foot and the flashing



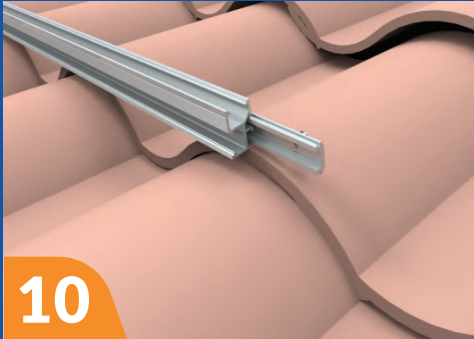
8 Drive a 3/8" bolt to connect the L-Foot and flashing to the roof (10 Ft Lb).



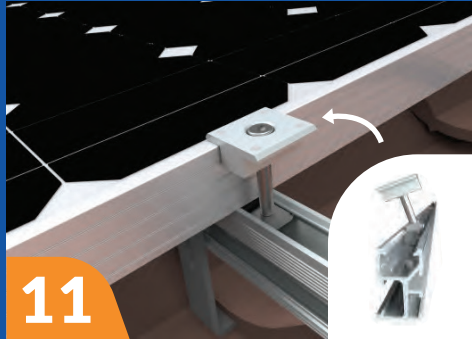
9 Connect Chiko Solar's proprietary Rail to the L-Foot using a flange nut. Tighten to secure (18 Ft Lb).



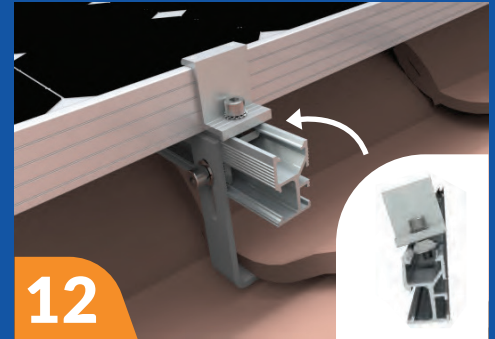
# S - Tile Hook Kit



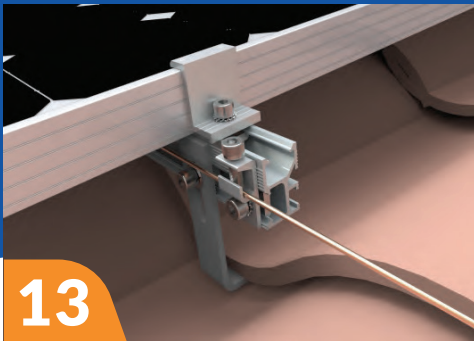
**10**  
Install our Rail splice kits at all connections between two rails. (10 Ft Lb).



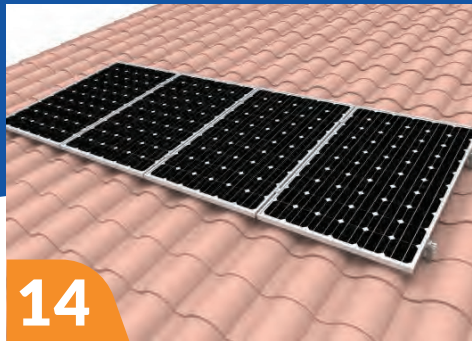
**11**  
Insert the Mid Clamp nut by tilting it in the opening on the top of the rail. Fasten and install at all locations where two modules meet (10 Ft Lb). Locations of mid clamps can be determined by panel manufacturer datasheet.



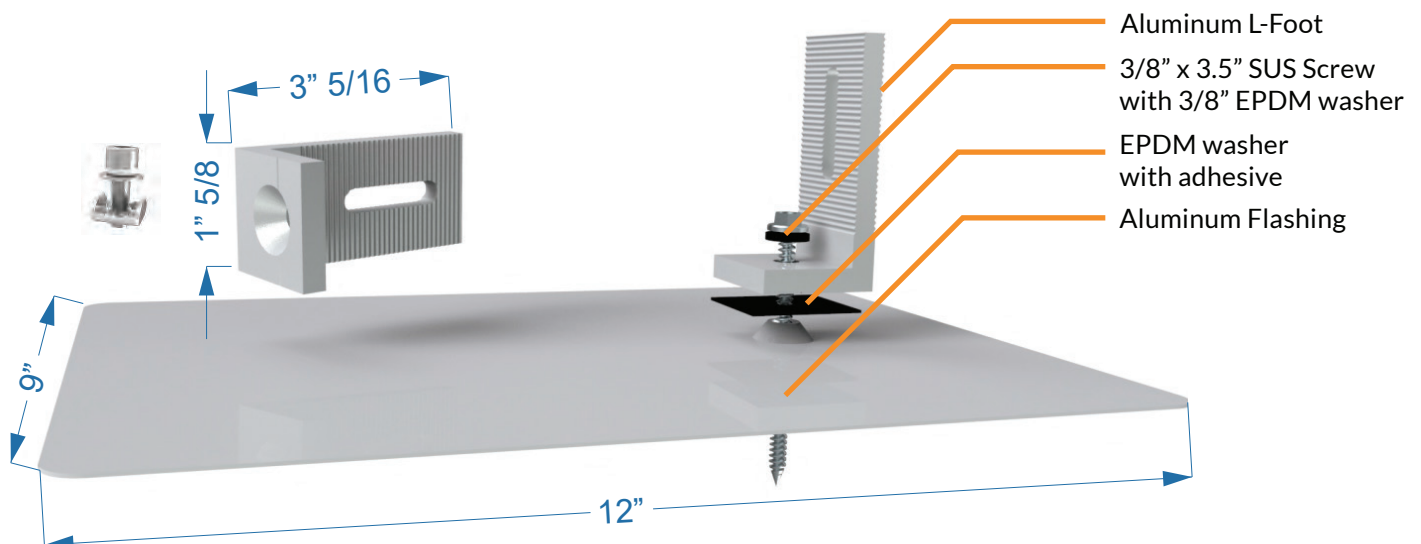
**12**  
Insert End Clamp nut by tilting it in the opening on the top of the rail. Fasten at the end of each array (10 Ft Lb).



**13**  
Install the Grounding Lug on each section of rail. Run copper wire to connect them all. Tighten to 3 Ft Lb.



**14**  
The system is complete.



# Important Information

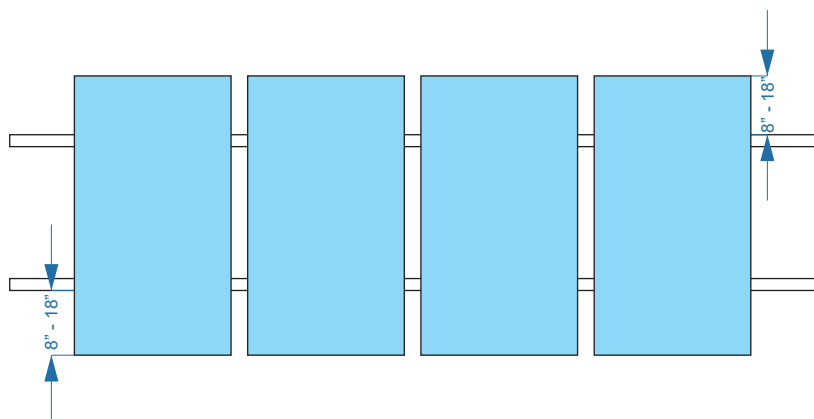
*Please read and follow the installation manual.*

This manual is for a non-integral module or panel, assemble it to be mounted over a fire resistant roof covering rated for application.

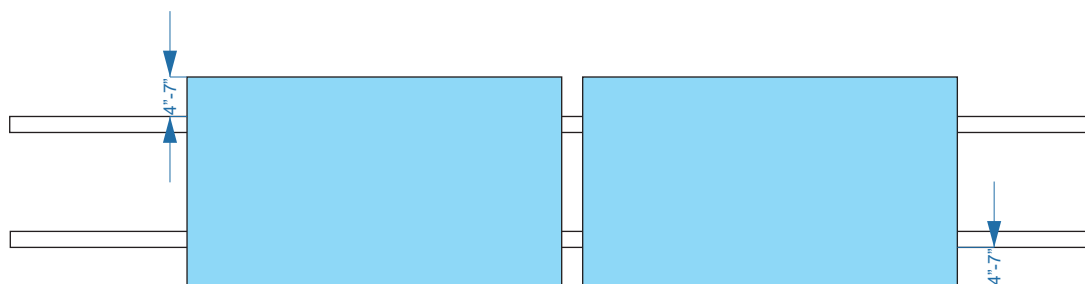
Re-inspect the installation for loose components, loose fasteners and any corrosion, such that if found, the affected components are to be immediately replaced

Rail spacings are as follows:

- When mounted in portrait rails may mounted 8" to 18" from the module edge.



- When mounted in landscape rails may be mounted 4" - 7" from module edge.



Chiko Solar passed UL System Fire Class A

**CHIKOUSA**  
RACKING MADE SIMPLE

**For additional information contact us :**

Tel : 1-800-948-5390

Email : [info@chikousa.com](mailto:info@chikousa.com)

[www.chikousa.com](http://www.chikousa.com)



101 East Baseline Road  
Buckeye, AZ 85326